



Environmental Hazards Survey



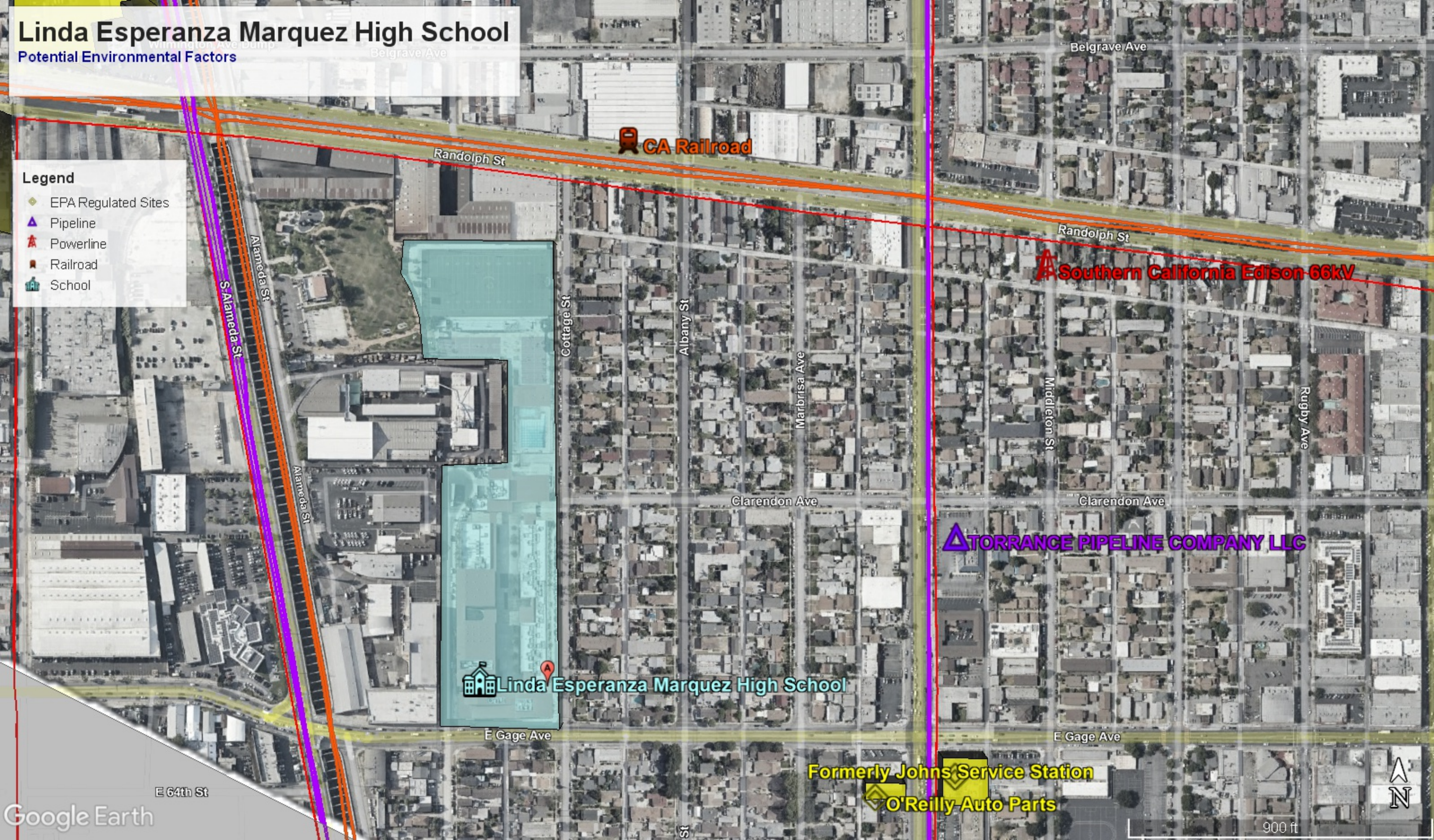
Linda Esperanza Marquez HS Social Justice (c. 2012)	Principal Kyle Boswell	
6361 COTTAGE ST, HUNTINGTON PARK, CA 90255	E-mail kbb1912@lausd.net	
323-584-3800	Site ID 14586	
	Yes	No
Rail line (active, easement, or spurs) within 128 ft?		X
Cellular phone antenna adjacent or on site?		X
50-200 kilovolt (kV) power line within 100 ft (above ground)/25 ft (below ground)?		X
200-230 kV power line within 150 ft (above ground)/37.5 ft (below ground)?		X
500-550 kV power line within 350 ft (above ground)/87.5 ft (below ground)?		X
Major transportation corridor within 500 ft?		X
Reservoirs, water, or fuel storage tank facilities within 500 ft?	X	
Haz mat transmission pipelines within 50 ft?		X
Oil production facilities (existing or former oil wells/borings and processing equipment) within 50 ft?		X
Located within an Oil Field / Methane Zone / Methane Buffer Zone?		X
Located within a High Risk Radon Zone?		X
Superfund Site within 500 ft?		X
Landfill facility within 500 ft?		X
Mapped or active earthquake fault within 500 ft?		X
CalEPA Regulated Sites of Concern* within 500 ft?	X	
Southern California Gas Company: Huntington Park Base (100 ft. west of school) R&W INC (100 ft. west of school) SAROYAN LUMBER CO INC (295 ft. west of school)		
* The CalEPA Regulated Site Portal (Portal) combines data about environmentally regulated sites and facilities in California into a single, searchable database and interactive map. To use the Portal to identify facilities near an LAUSD school: - First zoom in to a school location on the map by either using the search bar to enter the school's address or by using a mouse and zoom tools - Once the user has zoomed in to a school site, the map shows all the regulated sites near the school - Users can click on the regulated sites to find out additional information about the sites - The Portal also includes tools to measure the distances between locations on the map		
Here is a link to the CalEPA Regulated Site Portal:	https://siteportal.calepa.ca.gov/	

This survey was completed in **September 2022.**

Linda Esperanza Marquez High School

Potential Environmental Factors

- Legend**
- EPA Regulated Sites
 - Pipeline
 - Powerline
 - Railroad
 - School



CA Railroad

Southern California Edison 66kV

Δ TORRANCE PIPELINE COMPANY LLC

Linda Esperanza Marquez High School

Formerly Johns Service Station
O'Reilly Auto Parts